

TURNPIKE BUSINESS PARK

A RE-PLAT OF A PORTION OF BLOCKS 5 AND 6 INCLUDING THE PLATTED RIGHT-OF-WAY CONTAINED THEREIN, "PALM BEACH FARMS COMPANY PLAT No. 3," AS RECORDED IN PLAT BOOK 2, PAGES 45 THROUGH 54, INCLUSIVE, OF THE PUBLIC RECORDS OF PALM BEACH COUNTY, FLORIDA, LYING IN SECTION 33, TOWNSHIP 43 SOUTH, RANGE 42 EAST, PALM BEACH COUNTY, FLORIDA.

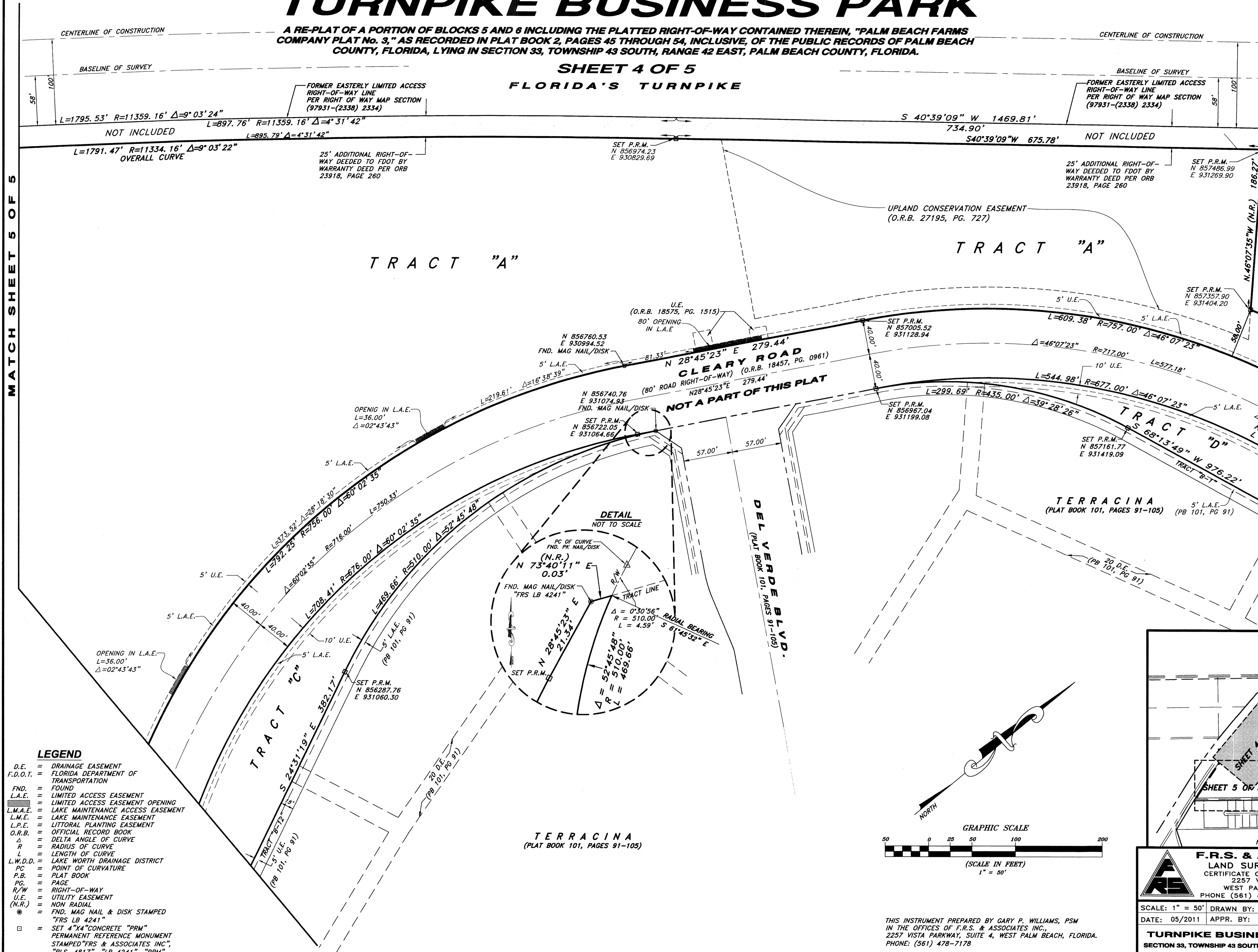
SHEET 4 OF 5 FLORIDA'S TURNPIKE

129

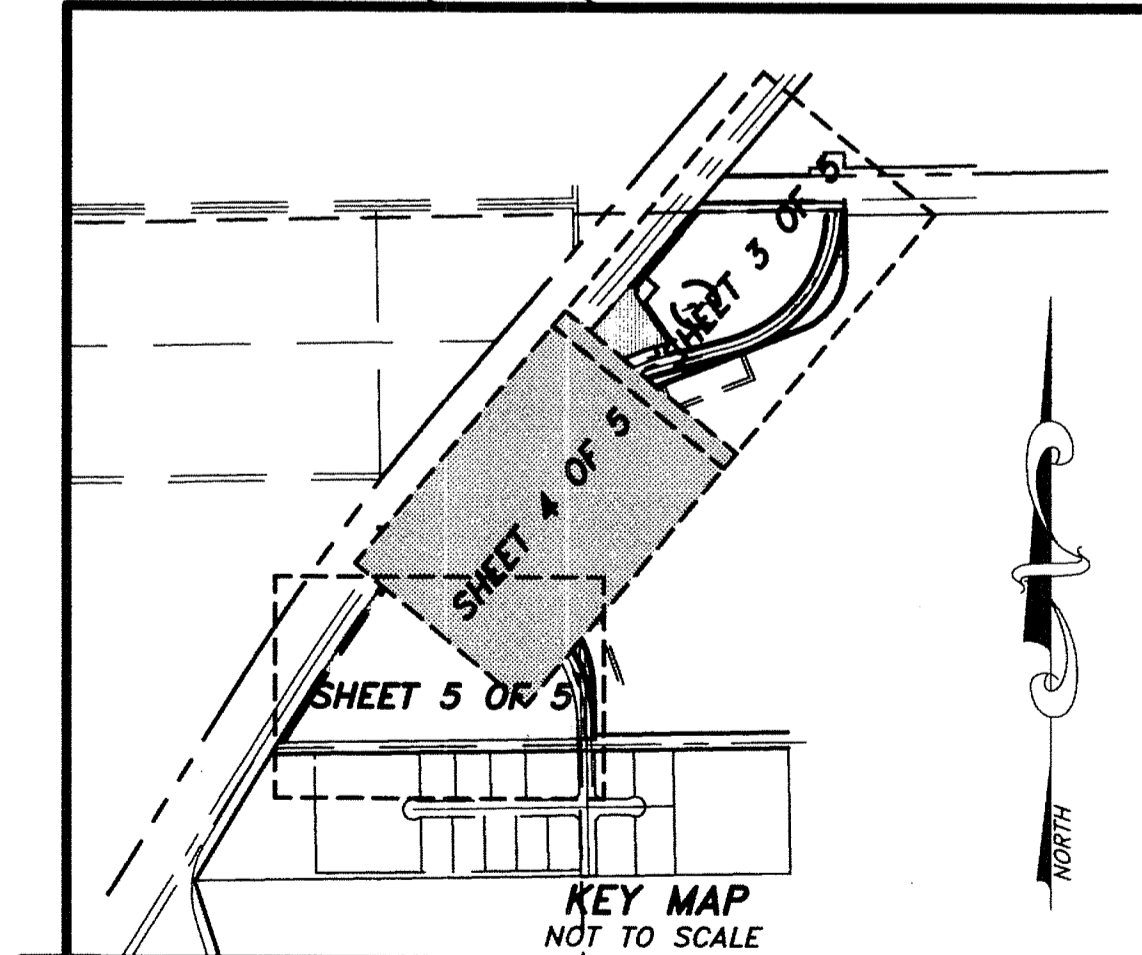
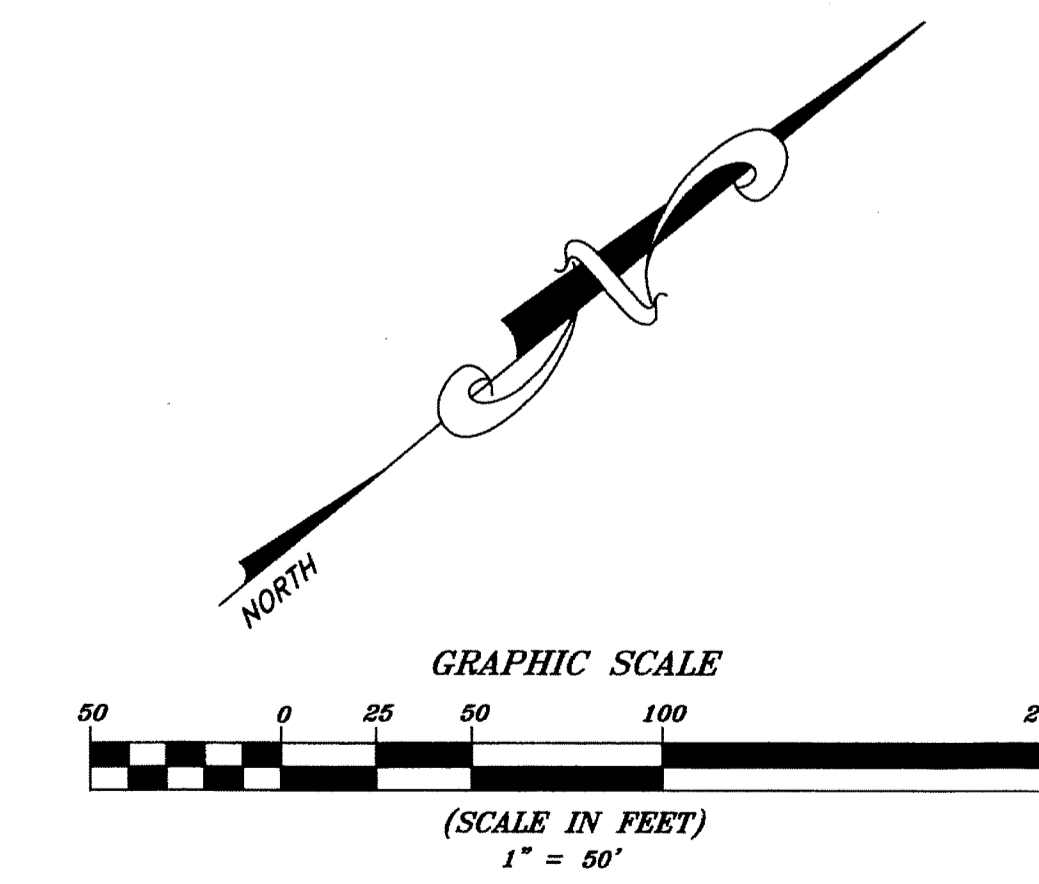
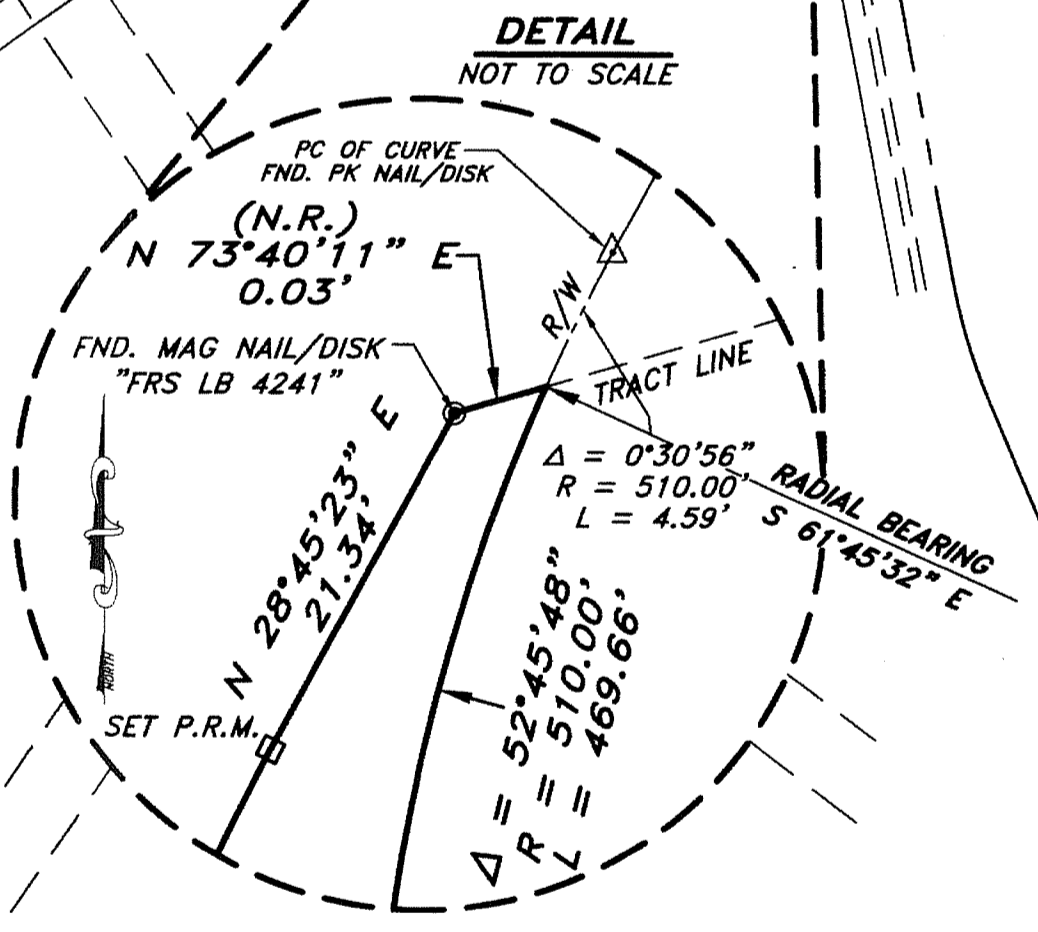
STATE OF FLORIDA SS
COUNTY OF PALM BEACH
This plat was filed for record at
this day of
2015 and duly recorded in
Plat Book No. on page
Sharon R. Bock, Clerk & Comptroller
By: _____

MATCH SHEET 5 OF 5

MATCH SHEET 3 OF 5



- LEGEND**
- D.E. = DRAINAGE EASEMENT
 - F.D.O.T. = FLORIDA DEPARTMENT OF TRANSPORTATION
 - FND. = FOUND
 - L.A.E. = LIMITED ACCESS EASEMENT
 - L.M.A.E. = LIMITED ACCESS EASEMENT OPENING
 - L.M.E. = LAKE MAINTENANCE ACCESS EASEMENT
 - L.P.E. = LAKE MAINTENANCE EASEMENT
 - L.P.F. = LITTORAL PLANTING EASEMENT
 - O.R.B. = OFFICIAL RECORD BOOK
 - Δ = DELTA ANGLE OF CURVE
 - R = RADIUS OF CURVE
 - L = LENGTH OF CURVE
 - L.W.D.D. = LAKE WORTH DRAINAGE DISTRICT
 - PC = POINT OF CURVATURE
 - P.B. = PLAT BOOK
 - PG. = PAGE
 - R/W = RIGHT-OF-WAY
 - U.E. = UTILITY EASEMENT
 - (N.R.) = NON RADIAL
 - = FND. MAG NAIL & DISK STAMPED "FRS LB 4241"
 - = SET 4"x4" CONCRETE "PRM" PERMANENT REFERENCE MONUMENT STAMPED "FRS & ASSOCIATES INC.", "RLS 4817", "LB 4241", "PRM"



F.R.S. & ASSOCIATES, INC.
LAND SURVEYORS AND MAPPERS
CERTIFICATE OF AUTHORIZATION NO. LB 4241
2257 VISTA PARKWAY, SUITE 4
WEST PALM BEACH, FLORIDA 33411
PHONE (561) 478-7178 FAX (561) 478-7922

SCALE: 1" = 50'	DRAWN BY: D. KUPSICK	FIELD BOOK/PAGE
DATE: 05/2011	APPR. BY: G.P. WILLIAMS	M2/12-21
TURNPIKE BUSINESS PARK		JOB NUMBER:
SECTION 33, TOWNSHIP 43 SOUTH, RANGE 42 EAST		D 08-020.A
PALM BEACH COUNTY, FLORIDA		SHEET 4 OF 5

THIS INSTRUMENT PREPARED BY GARY P. WILLIAMS, PSM
IN THE OFFICES OF F.R.S. & ASSOCIATES INC.,
2257 VISTA PARKWAY, SUITE 4, WEST PALM BEACH, FLORIDA.
PHONE: (561) 478-7178